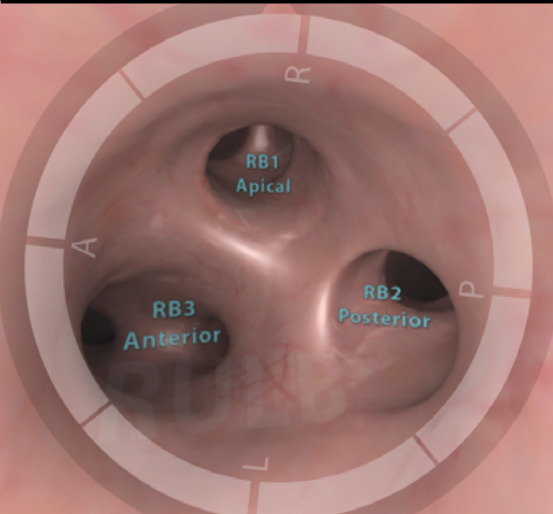
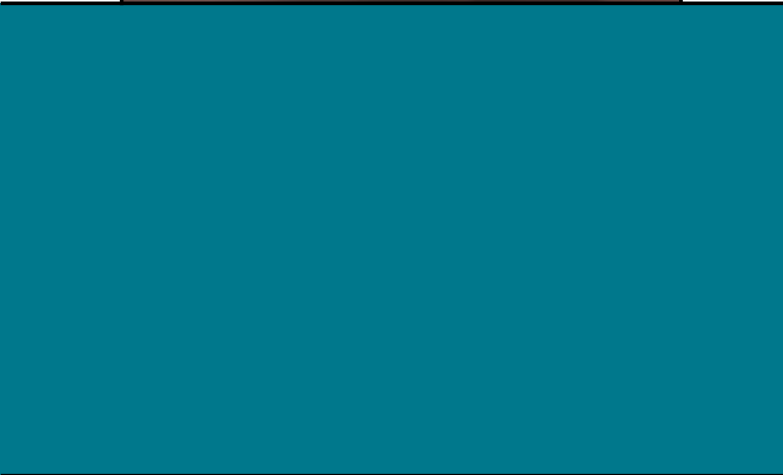
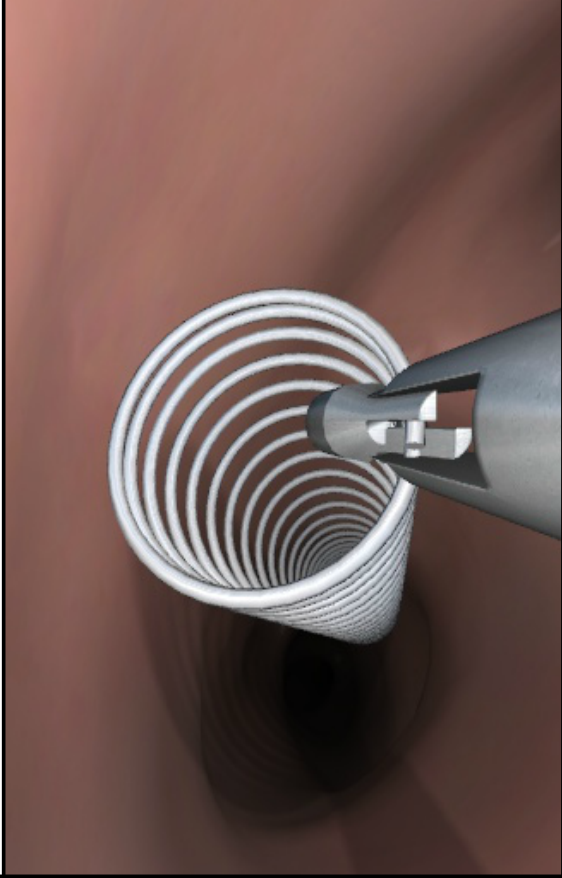


# BRONCH Mentor™



BDSYSTEMS®



## Simulator Platforms

### GI-BRONCH Mentor

A true-to-life training environment using an authentic scope with tactile feedback, and realistic visualization displayed on a 24" touch screen.

The flexible system configuration supports either lateral or posterior working positions for team or solo training.

This platform offers the most comprehensive bronchoscopy hands-on training available, as well as optional add-on modules for GI Endoscopy.



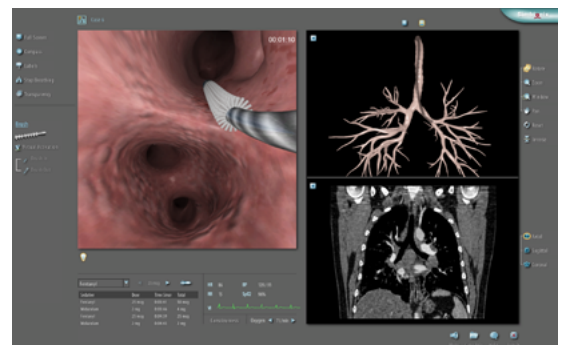
### BRONCH Express - Co-developed with CHEST (ACCP)

This innovative portable simulator provides a meaningful yet affordable hands-on solution to the growing demand for training and qualification for core bronchoscopy skills and procedures.



## Features and Benefits

- Realistic simulation featuring authentic scope, tactile feedback and a flexible working setup promoting team training.
- True to life virtual patient cases modeled after real patients.
- Comprehensive patient environment includes sedation, topical anesthesia, reactive vital signs, cough and complications.
- Unique educational environment enhances 3D perception, anatomical knowledge, procedural know-how and patient safety.
- Training and assessment are designed to foster safe and efficient performance while considering patient safety, procedural adequacy, clinical discretion, diagnostic yield and equipment safety.
- Meaningful performance metrics for self-assessment and competence demonstration prior to real patient practice.

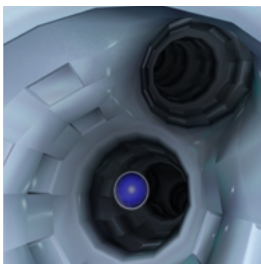


**Symbionix™**

*To Advance Clinical Performance*

The BRONCH Mentor™ provides the optimal learning environment for bronchoscopic skills acquisition and clinical procedure practice.

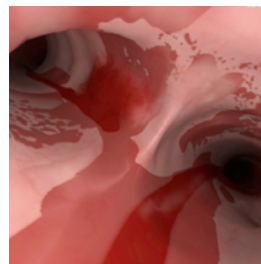
## BRONCH Mentor Modules



### Essential Bronchoscopy

Designated essential skill tasks to optimize novice users learning curve while acquiring and integrating bronchoscopic capabilities.

Developed in conjunction with and endorsed by the American Association for Bronchoscopy and Interventional Pulmonology (AABIP).



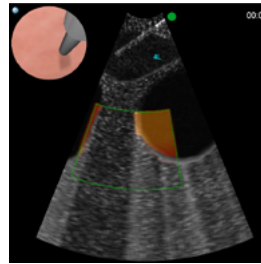
### Emergency Bronchoscopy

Emergency and ICU situations that require bronchoscopic intervention such as foreign body aspiration, endobronchial bleeding and secretion filled airways.



### Diagnostic Bronchoscopy

Virtual patient cases requiring diagnostic bronchoscopies, including airway inspection and various endobronchial / transbronchial tissue sampling methods.



### Essential EBUS

Tasks and complete clinical cases to enhance ultrasound image interpretation, anatomical structures recognition, and procedural performance of the complete EBUS-TBNA workflow.

## MentorLearn Simulator Curricula Management System

Simbionix multidisciplinary simulators effortlessly integrate into your program curriculum.



- Customizable curriculum that incorporate training and didactics.
- Easy and efficient administration of simulator users.
- Online learning courses and video-based content.
- Benchmarks based hands-on training.
- Performance reports with learning curve graphs.



**Simbionix™** *To Advance Clinical Performance*





## HEALTHCARE SOLUTIONS

3D Systems pioneered healthcare solutions that enhance quality-of-life through the use of 3D printing, surgical planning and personalized medical technologies. We are dedicated to helping medical professionals train for, plan, practice and perform complex medical procedures and achieve better patient outcomes.

3D Systems' Simbionix simulation products provide a complete solution for training programs with a full array of simulators, PROcedure Rehearsal Studio™ for case rehearsal and to create 3D printed personalized anatomical models, and MentorLearn™ for simulator management.

The company is committed to building an end-to-end Digital Thread for Personalized Surgery. We develop true patient-specific healthcare solutions, one-by-one or at scale, designed to change the future of personalized medicine.



*“The GI-BRONCH Mentor is absolutely vital to our simulation curriculum. Practicing on the simulator gives the residents and medical students a lot of confidence going into the actual tests. We chose the GI-BRONCH Mentor as it has the widest array of interesting cases in addition to ample teaching modules to enhance skills training.”*

Dr. Michael Ujiki  
Director, Simulation Lab  
NorthShore University HealthSystem  
Chicago, IL



## Simbionix Products Locations:

7100 Euclid Avenue, Suite 180, Cleveland, OH, 44103 USA  
Tel +1-216-229-2040, Fax +1-216-229-2070, Toll-free 1-866-746-2466

[simbionix@3dsystems.com](mailto:simbionix@3dsystems.com) | [www.simbionix.com](http://www.simbionix.com) | [www.3dsystems.com](http://www.3dsystems.com)



**Simbionix™** To Advance Clinical Performance