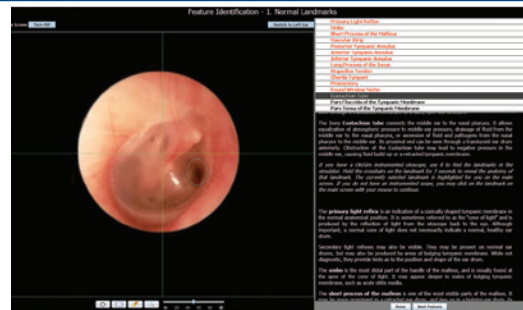




OtoSim 2™

Introducing the **new standard of excellence** in otolaryngology simulation and training technology

Increase Accuracy – OtoSim™ has been shown to improve diagnostic accuracy by more than 50%



NEW system enhancements optimize student training in diagnosing and treating ear pathologies.

OtoSim 2™ Upgrades – New Software, New Hardware, New Capabilities:

- **Close the learning feedback loop** – monitor student progress through the **instrumented otoscope**
- **Expand student knowledge** – system includes access to 380 high-resolution images, double the amount of images in OtoSim 1™
- **Maximize instructor efficiency** – connect up to 14 OtoSim™ units to a single trainer laptop to effectively instruct groups simultaneously
- **Supplement classroom instruction** – comes with **150 pre-annotated images** accessible to students for self-directed learning
- **Improve viewer retention** – features immersive full-screen experience with easy-to-use graphical interface
- **Enhance student proficiency** – includes series of advanced quizzes featuring randomized, realistic clinical scenarios that test both medical and patient interaction skills

PLACE YOUR OTOSIM 2™ ORDER TODAY:

Email: sales@otosim.com | Web: www.otosim.com
Phone: 1-866-964-5186 (North America) or 647-255-1321 (Worldwide)

OtoSim
BETTER EAR AND EYE TRAINING. BETTER OUTCOMES

OTOSIM 2™ DETAILED FEATURES

Features	OtoSim 1™	OtoSim 2™
Detailed text description	✓	✓
Basic imagery library - 200 images	✓	✓
Updated image library - over 380 images	✗	✓
Annotated anatomical landmarks (150 images)	✗	✓
Instrumented otoscope to track movement	✗	✓
Realistic image projection	✓	✓
Full-screen viewing	✗	✓
Live landmark annotation	✓	✓
Advanced quizzes with clinical scenarios	✗	✓
Anatomy quizzes	✗	✓
Instrument use tests	✗	✓
Feature identification modules	✗	✓
Search function	✗	✓
Multiplexing to up to 6 local units at once	✓	✓
Multiplexing to up to 14 local units at once	✗	✓

OTOSIM 2™ SOFTWARE CONTENT:

- **Instrument Use**
- **Feature Identification**
- **Pathology**
 - **External Auditory Canal** - Acute Otitis Externa, Cerumen, Foreign Bodies, and more
 - **Middle Ear** - Normal Tympanic Membrane, Temporal Bone Fractures, Acute Otitis Media, Serous Otitis Media, Tympanocentesis, Myringotomy, and more
- **Pneumatic Otoscopy** - Simulated slides to enhance students' pneumatic otoscopy skills – available with purchase of PneumatoSim™ add-on only
- **Self Examination and Anatomy Examination**

OTOSIM 2™ INCLUDES:

- **Base Unit**
- **Right Earform + Left Earform**
- **Instrumented Otoscope**
- **Control Box**
- **OtoSim 2™ Software Package & Manual**
- **Protective Hard Cases**
- **1-Year Warranty**

ACCESSORIES & EXTENDED WARRANTIES:

Pediatric Earform

PneumatoSim™ Pneumatic Otoscopy Upgrade Kit

Includes:

- Pneumatic Ear with Pressure Hose
- Pneumatic Otoscope
- PneumatoSim™ Software & Manual on USB Key
- 1-Year Warranty
- Protective Case



Educators Toolkit Software Upgrade

Software add-on to OtoSim 2™ for customized education sessions and mass training. Features include ability to:

- Upload and pre-annotate your own images
- Customize your lecture slides
- Connect, lead and monitor an unlimited number of OtoSim™ users to enable distance learning

OtoSim 2™ Extended Warranty – Can be extended for a total of 2 or 3 years

Note to OtoSim 1™ Owners: OtoSim 2™ is compatible with the OtoSim 1™ base unit, so the investment that you have made in OtoSim 1™ is preserved.



PLACE YOUR OTOSIM 2™ ORDER TODAY:

Email: sales@otosim.com | Web: www.otosim.com
Phone: 1-866-964-5186 (North America) or 647-255-1321 (Worldwide)

OtoSim
BETTER EAR AND EYE TRAINING. BETTER OUTCOMES.